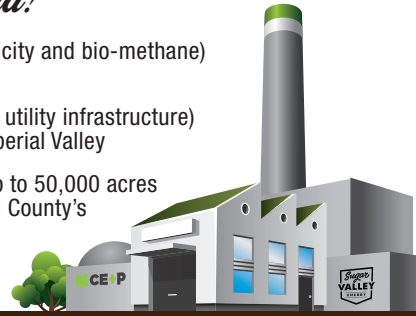




## *In Imperial County, California!*

- Sustainable low-carbon energy (ethanol fuel, electricity and bio-methane) from the right renewable resource – sugarcane
- Infrastructure (clean energy, wastewater treatment, utility infrastructure) to support further economic development in the Imperial Valley
- A long-term economically sustainable market for up to 50,000 acres of sugarcane crop production that expands Imperial County's agricultural employment base



The Sugar Valley Energy campus efficiently uses the entire lifecycle of the harvested sugarcane crop and its byproducts in one integrated site.

SVE CAMPUS ELEMENTS



### SUGARCANE ETHANOL PLANT

- Capacity to produce 71M Gallons per year of low-carbon fuel-grade ethanol
- California currently imports more than 1.2B gallons of ethanol annually; Sugar Valley Energy makes CA more ethanol-independent
- Current transportation fuel blend is 10% ethanol; demand for our low carbon ethanol is expected to increase in the future based on California's continuing emission reduction requirements

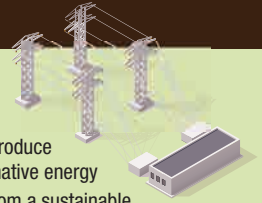
### BIO-METHANE PLANT

- Uses the remaining by-product of sugarcane plant (vinasse)
- Produces 760 million cubic feet (mcf) annually of bio-methane gas
- Gas will be piped to existing distribution systems and used to heat businesses and homes in the region



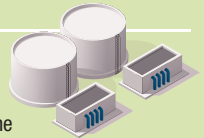
### ELECTRICAL POWER PLANT

- Uses juiced sugarcane feedstock to produce 43 megawatts annually of clean alternative energy
- Supplies power to the regional grid from a sustainable, low-carbon fuel source
- Helps California meet its sustainable energy production targets



### WASTEWATER TREATMENT PLANT

- Will process 100% of the wastewater from the entire energy campus and provide excess capacity to treat one million gallons of wastewater per day for nearby businesses and homes.
- Represents vital infrastructure for planned future economic development surrounding the SVE site



## SUGARCANE, HOW SWEET IT IS!

- Sugarcane is highly suited for the Imperial Valley climate and has water demand similar to alfalfa, one of the region's existing dominant crops
- Sugar Valley Energy will seek long-term agreements with 100+ farmers
- SVE to plant, maintain and harvest the sugarcane
- SVE to pay all growing costs, rent and profit

## SUGAR VALLEY ENERGY CREATES NEW JOBS & ECONOMIC ACTIVITY\*

**\$1.29  
BILLION**

direct investment (construction costs and business revenues) will result in a total economic impact of \$1.7 Billion

**\$928  
MILLION**

in economic activity will occur directly within Imperial County

**15,122  
FULL AND  
PART-TIME JOBS**

will benefit from the construction and first year of operations

APPROXIMATELY  
**250**

JOBS WILL BE CREATED to operate the new SVE campus

\*Source: Project economic analysis by Circle Analytics, Inc. February 2020